

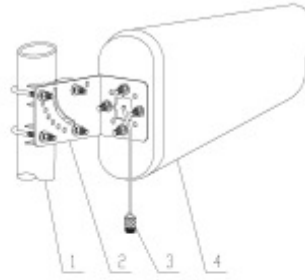


**Wide band Cellular Yagi Antenna
REN 68011 YNX**

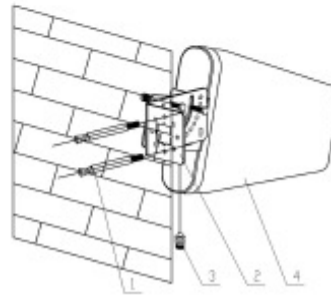
PARAMETERS	SPECIFICATIONS
Frequency Range	806 ~ 960 MHz 1710 ~ 2500 MHz
VSWR	<1.5: 1
Gain	9.5/11.0 dBi
Polarization	Vertical or Horizontal
Max. Power	50 Watts
Horizontal Plane Beamwidth	806 ~ 960 MHz : 90 ⁰ 1710 ~ 2500 MHz : 70 ⁰
Vertical Plane Beamwidth	55 ⁰
Front to Back Ratio	> 18 dB
Impedance	50 Ω
Lightning Protection	DC Ground
Connector	N (F)
Material	ABS
Weight (Approx.)	1.0 Kg
Working Temperature	-40 ⁰ C - +60 ⁰ C
Dimensions	293×210×65 mm(exclude clamps)



Installation Sketch



Pole Installation



Wall Mount Installation